

DSN37c



DSN37c Multipin – 7.5A Plugs & Receptacles

Ratings

- **Voltage**
Up to 480 VAC Max/130 VDC
- **Amperage Rating**
2A Current Interrupting
7.5A Non-Current Interrupting
! DSN37c is capable of handling
4-20mA low current applications
- **Environmental Ratings**
IP66+IP67
- **Temperature Range**
Min -40°F/Max 140°F
See pg 220 for temps below -15°F.
- **Wiring Capacity**
Min 18 AWG Max 14 AWG
- **Listings**
CE*
* Contact Customer Service

For DSN37c dimensions, see pgs 33-34

New Feature

- **Crimped Contacts**
DSN37c devices now feature contacts that can be crimped or soldered. Each device is supplied with 3 bags of 13 contacts so that the product can be set up to suit application needs.

Receptacle (female)



Don't forget to add installation accessories to your order



Inlet (male)



Voltage	Polarity	Part # Poly
50V	37P+	63-C4003
480V	36P+G+	63-C4003

Voltage	Polarity	Part # Poly
50V	37P+	63-C8003
480V	36P+G+	63-C8003

+ 37P for devices up to 50V or 36P+G for devices up to 480V. Multiple voltage labels are provided for application in the field.

Simple Assembly and Disassembly



Assembly

To insert contacts when they have been wired is simple. Push wired contact into rear of insulator until it stops to complete the installation.



Disassembly

To remove, use the tool provided. Push tool from front onto contact until tool stops. Contact is then released at rear of insulator.

Main Options



Padlock Pawl



Mushroom Pawl



Self-Ejecting Devices*

* Requires straight insertion receptacle or inlet and self-ejecting plug or connector

Receptacle Options	Part #
Straight Insertion	Recept # - A188
Self-Ejecting Connector Release	Recept # - 345-A188
Mushroom Pawl	Recept # - 375
Padlock Pawl	Recept # - 843
Padlockable Mushroom Pawl	Recept # - 375- 843
Closed Lid Configuration	Recept # - NC



See pgs 197-206 for detailed information on these options

Inlet Options	Part #
Self-Ejecting Plug Release	Inlet # - 338-A188
Straight Insertion	Inlet # - A188

DSN37c Order Example:

To order a device with a Mushroom Pawl add **-375** to the receptacle part number

DSN37c 32P = 63-C4003-375

Installation Accessories

Handles



Makes connector closures easier

NPT	Poly Handle	Cable Range	Poly Handle w/Clamp & Bushing	Nylon Handle	Poly Handle w/built in Draw Grips
1/2"	61-6A013-12	.32 - 1.25	-	-	61-6A473
3/4"	61-6A013-34	.39 - 1.18	-	61-6A013	-
1"	61-6A013-1	.750 - .875	3PM514	-	-
1 1/4"	61-6A013-114	.875 - 1.000	3PM516	-	-
		1.000 - 1.125	3PM518	-	-
		1.125 - 1.250	3PM520	-	-
		1.250 - 1.375	3PM522	-	-

NPT Guidelines

Cable Range	NPT
.312 - .625	1/2"
.438 - .812	3/4"
.660 - 1.000	1"
.875 - 1.375	1 1/4"

NPT sizes are determined by the cable diameter and third party cord grip.

- Notes:**
- Finger draw plates are recommended for easier connector closure on cord to cord assemblies.
 - For available cord grips see pgs 193-194.

Angles



Nylon 30° Angle	Metal 30° Angle	Metal 70° Angle	Metal Angle FS/FD Box 30°	Metal Straight Adapter
61-6A027	MA3	89-3A027	MAFS3	MS3

Junction Boxes



32.5 in³*



16.4 in³*



188.6 in³*

NPT	Metal Box	Metal Box with Nylon Angle	Poly* Conduit Entry	Poly 70°** Wall Box
1/2"	MB312	61-6A053-080-12	61-6A023-12	51-CA058
3/4"	MB334	61-6A053-080-34	61-6A023-34	51-CA058
1"	MB31	61-6A053-080-1	61-6A023-1	51-CA058
1 1/4"	MB3114	61-6A053-080-114	-	51-CA058

- * For poly devices only
 ** 70° boxes are not drilled. Contact customer service if factory drilling is required.
 * Interior volume with receptacle installed.

Miscellaneous Accessories



* Set of Two (2)



For Male Devices Only



For Male Devices Only



Finger Drawplates	Protective Cap	Padlockable Plug Cap	Cord Grip with Mesh	Multi-Contact Removal Tool	Crimper Tool (Greenlee or equal)	European Crimping Tool
61-6A346	61-6A126	61-6A826	see pgs 193-194	9-LD12-37	4CN30	61-CA500

* Recommended for cord to cord assembly applications, for easier connector closure

Order Example

A typical order should include an inlet part number, a receptacle part number **AND** the matching handles, angles or other required accessories.

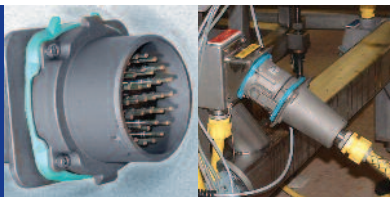


Male Inlet with Handle (Plug)
63-C8003 + 61-6A013



Female Receptacle with Angle Adapter
63-C4003 + 61-6A027

DS37c



DS37c Multipin – 7.5A Stainless Steel Plugs & Receptacles

Ratings

- **Voltage**
Up to 480 VAC Max*/130 VDC
- **Amperage Rating**
2A Current Interrupting
7.5A Non-Current Interrupting
! DS37c is capable of 4 - 20mA low current applications.
- **Temperature Range**
Min -40°F/Max 140°F
- **Wiring Capacity**
Min 18 AWG Max 14 AWG

For DS37c dimensions, see pgs 51-52

Receptacle (female)



Don't forget to add installation accessories to your order

Inlet (male)



Voltage	Polarity	Part # Stainless Steel
50V	37P ⁺	37-C4003-SS
480V	36P+G ⁺	37-C4003-SS

Voltage	Polarity	Part # Stainless Steel
50V	37P ⁺	37-C8003-SS
480V	36P+G ⁺	37-C8003-SS

* 37P for devices up to 50V or 36P+G for devices up to 480V. Multiple voltage labels are provided for application in the field.

NEW Feature

New Feature

- **Crimped Contacts**
DS37c devices now feature contacts that can be crimped or soldered. Each device is supplied with 3 bags of 13 contacts so that the product can be set up to suit application needs.

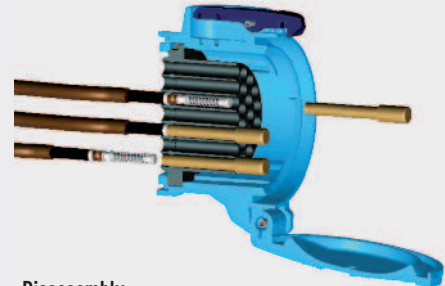
Simple Assembly and Disassembly

DSN37c shown



Assembly

To insert contacts when they have been wired is simple. Push wired contact into rear of insulator until it stops to complete the installation.



Disassembly

To remove, use the tool provided. Push tool from front onto contact until tool stops. Contact is then released at rear of insulator.

Installation Accessories

Handles



NPT	Stainless Steel Handle
3/4"	3H34SS
1"	3H1SS
1 1/4"	3H114SS

NPT Guidelines

Cable Range	NPT
.438 - .812	3/4"
.660 - 1.000	1"
.875 - 1.375	1 1/4"

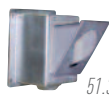
NPT sizes are determined by the cable diameter and third party cord grip.

Angles



Stainless Steel 30° Angle
MA3SS

Junction Boxes



NPT	Stainless Steel Box with* Stainless Steel Angle	Stainless Steel Box
1	39-3A053-080-SS-1	MB31SS

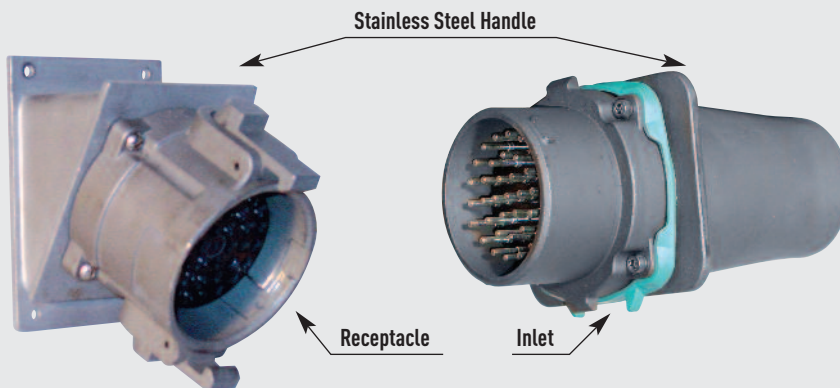
Notes: * Includes angle adapter as shown.
* Interior volume with receptacle installed.

Miscellaneous Accessories



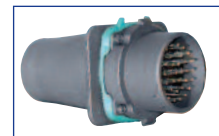
Multi-Contact Removal Tool	Crimper Tool (Greenlee or equal)	European Crimping Tool
9-LD12-37	4CN30	61-CA500

DS37c Stainless Steel Multipins are made of cast stainless steel.



Order Example

A typical order should include an inlet part number, a receptacle part number **AND** the matching handles, angles or other required accessories.



Male Inlet with Handle (Plug)
37-C8003-SS + 3H1SS



Female Receptacle with Angle Adapter
37-C4003-SS + MA3SS